

# SGO G500 AC

## EURO AC SLIDER OPERATOR



**SGO G500 SLIDER GATE OPERATOR**  
Control and connection

## 1. IMPORTANT INFORMATION

This simplified Installation Manual is designed strictly for trained and professional gate automation personnel only.

In case of power failure, unlock the Release Handle (as shown) by using supplied Key and pull the Handle outward about 90 degrees/until it is stopped and the gate can be moved by hand.

The cover of the operator should only be opened by the professionals and the operator power supply has to be switched off before performing any maintenance, services and connection to the Control Board.

A safety switch/circuit breaker is highly recommended for overload and short circuit protection.

The earth has to be connected to the GDN terminal of J3 on the Board (see Fig. 2).

The power supply cables and the low voltage control cables must be installed separately.

One of Magnet Travel Limit Switch is to be used/fitted for gate Open and the other is for gate Close. Please carefully identify them.

## 3. CIRCUIT BOARD AND TERMINAL

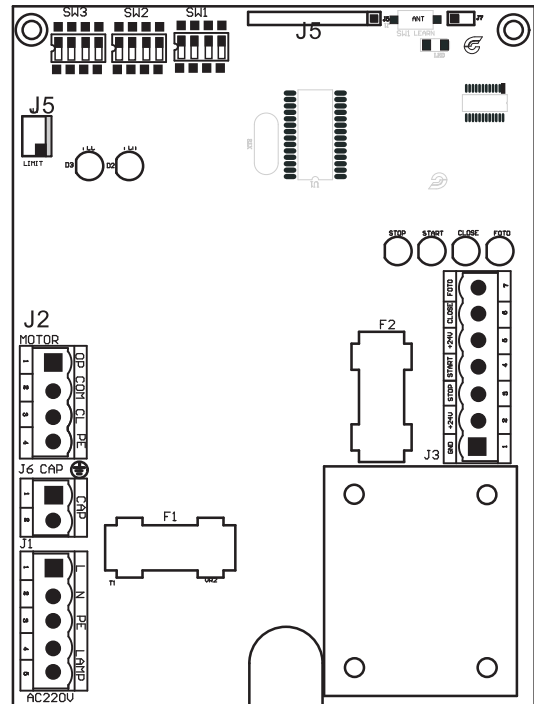


Fig.1

## 2. TECHNICAL SPECIFICATION

|                   |                                    |
|-------------------|------------------------------------|
| Model             | G500                               |
| Power Supply      | 220V 50Hz (+6% to 10%)             |
| Absorbed Power    | 350 W                              |
| Max. Current      | 5 A                                |
| Temperature Range | -20 C to +50 C                     |
| Rack              | Module 4                           |
| Pinion            | Z16                                |
| Gate Speed        | 12 Meter / Min.                    |
| Max. Gate Length  | 12 Meters                          |
| Control           | One or Three Channel               |
| Input Terminal    | GND, +24V, Stop, Open, Close, Foto |
| Output Terminal   | Light, Motor, Power                |
| Receiver Terminal | 6-Pin board                        |
| Control Setting   | Dip-Switch                         |
| Basic Function    | Set Control and Operating Time     |

| Terminal | Function                               |
|----------|--|
| J1       | Power and Flash Light connection       |
| J2       | Motor connection                       |
| J3       | Low voltage (24V DC) connection        |
| J4       | Travel limit switch connection         |
| J5       | Receiver board connection              |
| J6       | CAP(MOTOR)                             |
| F1       | Motor/Transformer fuse (5A)            |
| F2       | Low voltage fuse (0.5A)                |
| SW1      | Dip-switch for setting control         |
| SW2      | Dip-switch for Setting operating force |
| SW3      | Dip-switch for setting operating time  |

## 3. CIRCUIT CONNECTION

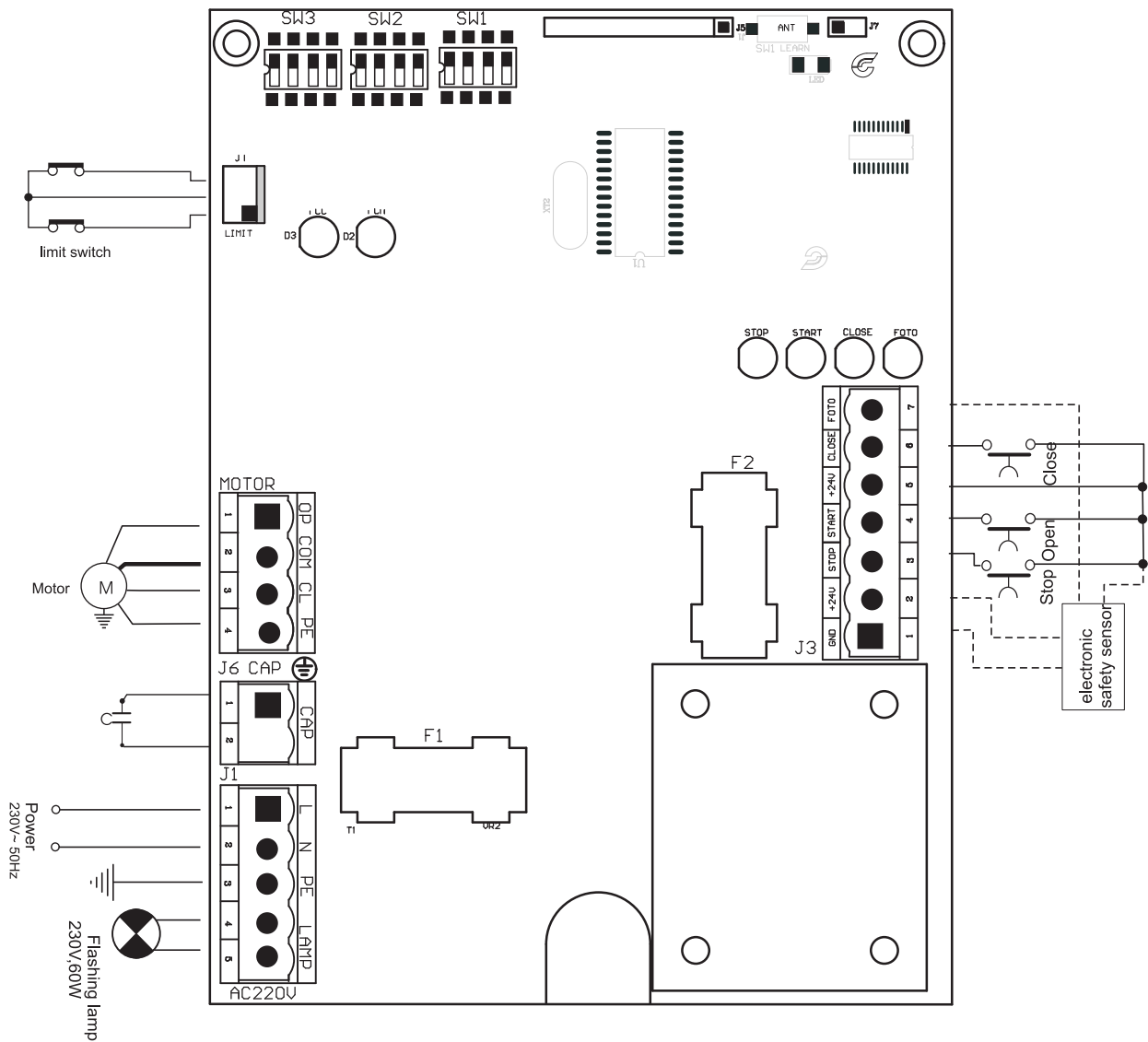


Fig. 2

### 3.1 CONNECTING THE INFRA RED DEVICE J3 TERMINAL

#### 3.1.1 When an Infra Red Safety Device is not installed.

Connecting the terminal 5 and 7 on J3 (see Fig. 3).

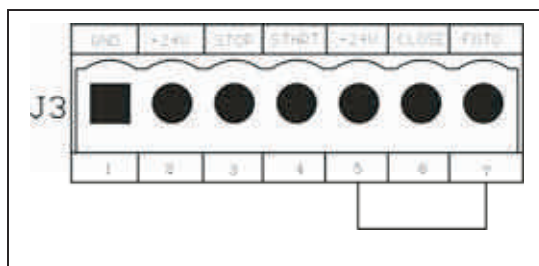


Fig. 3

### 3.1.2 Connecting the Infra Red Safety Device (see Fig. 4)

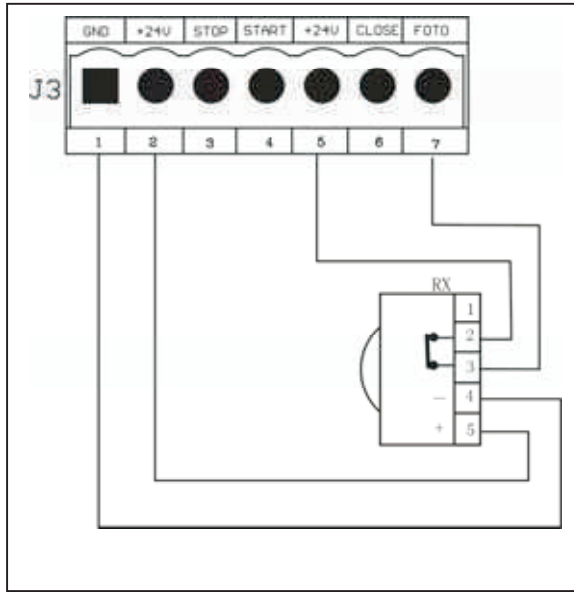


Fig. 4

### 3.2 CONNECTING POWER AND FLASHING LIGHT J1 TERMINAL (see Fig. 2)

Power Input (Terminal PE -N - L)

PE: Earth

N: Neutral

L: Positive

Flashing Light: Terminal 4 & 5

Warning: the system MUST be earthed purposely and a Circuit Break Device should be installed for the gate power supply.

### 3.3 CONNECTING TO THE MOTOR J2 TERMINAL (see Fig. 2)

Motor Terminal: 1 - 2 - 3 (pre-wired).

### 3.4 CONNECTING OPERATION CONTROLS J3 TERMINAL (see Fig. 2)

**START:** Terminal 4 on J3 (normal open).

Any Pulse signals (push button, swipe card etc) that can close the connection will control the operator to Open, Stop and Close.

In the case of connecting a single Push Button control, connecting the input and output wire of the Push Button into the Terminal 4 and 5.

**STOP:** Terminal 3 on J3 (normal close).

Any device that can open the connection will stop the operator. To be used in the event of 3-button control.

**CLOSE:** Terminal 6 on J3 (normal close)

Any device that can open the connection will stop the moving gate.

**GND:** Terminal 1 on J3 (Negative/Earth of the DC power supply).

**+24V:** Terminal 2 on J3 (+24 VDC power supply, Maximum current: 0.5A).

**FOTO:** Terminal 7 on J3 (Normal Closed). Note: when the Infra Red Device was not installed, the Terminal 5 & 7 must be connected.

### 3.5 CONNECTION OF TRAVEL LIMIT SWITCH J4 TERMINAL (see Fig. 2)

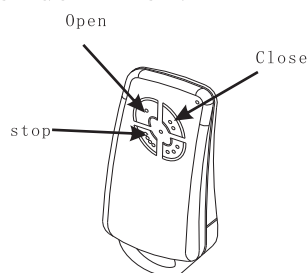
For stopping the operator (internal connection is pre-wired).

### 3.6 RECEIVING BOARD (see Fig 2)

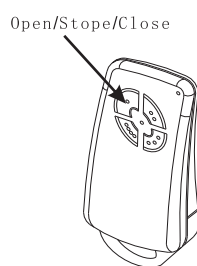
3.6.1 learning code: Pressing LEARN button until the LED light blight, then Double-click the same button fast . After the LED flashes quickly and then extinguished, Learning code success.

3.6.2 Deleting code: Press LEARN button when power off, and then connected to power. release the LEARN button until the LED light lights, then deleting code success.

#### 3.6.3.1 Single / three button operation definition:



#### 3.6.3.2 One-touch remote control mode



## 4. PROGRAMING AND SETTING

### 4.1 Setting the remote control function Dip Switch SW 1

|     | 1                 | 2                | 3   | 4                                       |
|-----|-------------------|------------------|---|---|
| ON  | Soft Start is ON  | Soft Stop is ON  | Auto Closing is ON<br>(2 min. time delay) | Single Channel Control<br>(recommended) |
| OFF | Soft Start is OFF | Soft Stop is OFF | Auto Closing is OFF                       | 3-Channel Control                       |

## 4.2 Setting operating force Dip Switch SW2

SW2

| 1   | 2   | 3   | 4   | OPERATING force (level 1 = the lowest, level 16 = the highest) |
|-----|-----|-----|-----|--|
| OFF | OFF | OFF | OFF | FORCE LEVEL 1  |
| OFF | OFF | OFF | ON  | FORCE LEVEL 2  |
| OFF | OFF | ON  | OFF | FORCE LEVEL 3  |
| OFF | OFF | ON  | ON  | FORCE LEVEL 4  |
| OFF | ON  | OFF | OFF | FORCE LEVEL 5  |
| OFF | ON  | OFF | ON  | FORCE LEVEL 6  |
| OFF | ON  | ON  | OFF | FORCE LEVEL 7  |
| OFF | ON  | ON  | ON  | FORCE LEVEL 8  |
| ON  | OFF | OFF | OFF | FORCE LEVEL 9  |
| ON  | OFF | OFF | ON  | FORCE LEVEL 10   |
| ON  | OFF | ON  | OFF | FORCE LEVEL 11   |
| ON  | OFF | ON  | ON  | FORCE LEVEL 12   |
| ON  | ON  | OFF | OFF | FORCE LEVEL 13   |
| ON  | ON  | OFF | ON  | FORCE LEVEL 14   |
| ON  | ON  | ON  | OFF | FORCE LEVEL 15   |
| ON  | ON  | ON  | ON  | FORCE LEVEL 16   |

## 4.2 Setting total operating time Dip Switch SW 3

SW3

| 1   | 2   | 3   | 4   | TOTAL OPERATING TIME |
|-----|-----|-----|-----|----------------------|
| OFF | OFF | OFF | OFF | 8 Seconds            |
| OFF | OFF | OFF | ON  | 16 Seconds           |
| OFF | OFF | ON  | OFF | 24 Seconds           |
| OFF | OFF | ON  | ON  | 32 Seconds           |
| OFF | ON  | OFF | OFF | 40 Seconds           |
| OFF | ON  | OFF | ON  | 48 Seconds           |
| OFF | ON  | ON  | OFF | 56 Seconds           |
| OFF | ON  | ON  | ON  | 64 Seconds           |
| ON  | OFF | OFF | OFF | 72 Seconds           |
| ON  | OFF | OFF | ON  | 80 Seconds           |
| ON  | OFF | ON  | OFF | 88 Seconds           |
| ON  | OFF | ON  | ON  | 96 Seconds           |
| ON  | ON  | OFF | OFF | 104 Seconds          |
| ON  | ON  | OFF | ON  | 112 Seconds          |
| ON  | ON  | ON  | OFF | 120 Seconds          |
| ON  | ON  | ON  | ON  | 128 Seconds          |

## **PRODUCT WARRANTY**

The manufacturer, provides the original purchaser of the opener ("Product") warranty that the product is free of any defect in workmanship or materials for a period of ONE year from the date of purchase , subject to the warranty conditions set out below.

The benefits conferred by this warranty are in addition to all implied warranties, other rights and remedies in respect of the product that the purchaser has under the Trade Practices Act and similar State and Territory Laws in Australia at the time of product purchase.

### **Warranty Conditions:**

1. The warranty will only be given where proof of original purchase receipt is provided and return of the Product that is alleged to be defective to manufacturer .
2. This warranty is only valid for a Product installed by the manufacturer and used strictly according to the instructions in the owner's manual. The decision for repair or replacement of any part shall be at the discretion of manufacturer. The instructions provided in the owner's manual cover information regarding installation, operation and maintenance of the Product. In the event that the Product is not installed by manufacturer, the warranty is on a "Back-To-Base" warranty basis and warranty shall cover only replacement of parts and labor costs for repairing. The purchaser must organize the return of the product to manufacturer for inspection and repair. All costs associated with the return of the product to manufacturer such as courier, shipping and other transportation related expenses shall be borne by the purchaser. The Product must not be modified or changed in any way.
3. The warranty shall not apply and the manufacturer, reseller/distributor expressly exclude all or any liability for direct or consequential damage, loss, physical injury, claim or expense as a result of damage by user(s), negligent handling, misuse, incorrect installation or installation not in accordance with the installation instructions, incorrect service and operation, not in accordance with the owner's manual.